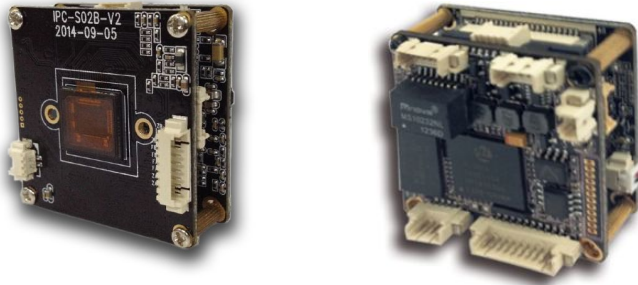


S238H18C-L26

1.4 megapixel Low-light 2 Boards IP Camera Module, Hi3518C + SONY IMX238

1/3" SONY IMX238 low illumination CMOS sensor, Hi3518C Chipset, the highest resolution of 1280 * 1024, 0.1 Lux@F1.2 (color); 0.01 Lux@F1.2 (black and white); 38X38mm 2 boards; IR - CUT (day/night), adapt Bullet, Dome; H.264 video coding, double stream, ONVIF 2.4, be compatible many NVR and platform management software.



Features

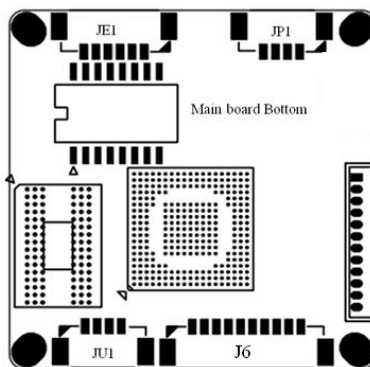
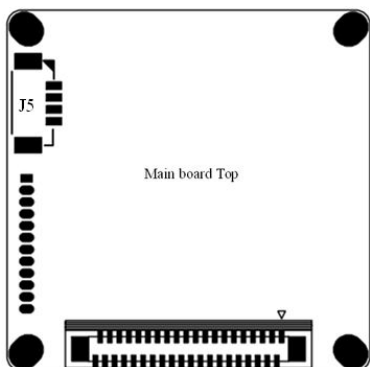
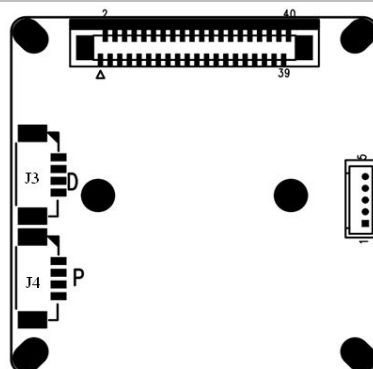
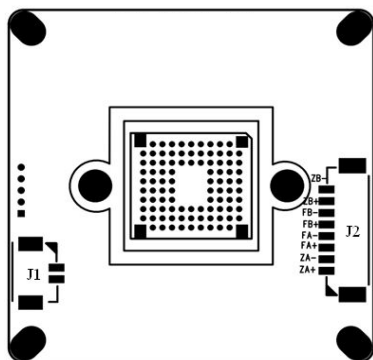
- > Single board, 1.4 Megapixel low light, IR-CUT drive, low power consumption, 3D noise reduction, H. 264
- > Hisilicon 3518C/ 3518A
- > 1/3" 1.4 Megapixels Progressive Scan Sony Exmor CMOS
- > Max 25/30fps@1.4 Megapixels (1280x1024, 1280x960, 1280x720)
- > H.264 & MJPEG dual-stream encoding
- > DWDR, Day/Night (ICR), AWB, AGC
- > Multiple network monitoring: Web viewer, Smart phone.
- > 3D DNR
- > Privacy Mask, Motion Detection
- > Support ONVIF 2.4 protocol

Specifications

Model	S238H18C-L26
Camera	
Image Sensor	1/3" 1.4 Megapixels Progressive Scan Sony IMX238 Exmor CMOS
CPU	Hisilicon 3518C
Effective Pixels	1280(H)x1024(V)
Scanning System	Progressive
Electronic Shutter Speed	Auto (1/25 ~ 1/10000s)
Min. Illumination	0.1Lux/F1.2 (Color), 0.01Lux/F1.2(B/W)
S/N Ratio	≥50db(AGC OFF)
Camera Features	
Day/Night	Auto(ICR)/Color/B/W
WDR	Digital WDR
White Balance	Auto
Gain Control	Auto
Noise Reduction	3D

Privacy Masking	Up to 4 areas	
Video		
Compression	H.264/MJPEG	
Resolution	1024P(1280×1024)/960P(1280*960)/720P(1280×720)/D1(704×576)/VGA(640*480)/QVGA(320×240)	
Frame Rate	Main Stream	1024P/960P/720P(1 ~ 25/30fps)
	Sub Stream	D1/VGA/QVGA(1 ~ 25/30fps)
Bit Rate	32KB ~16Mbps, support VBR, CBR	
Text Overlay	Channel, Date & Time, Bit Rate	
Network		
Data Storage	Video record, Picture format	
Trigger	Manual, Automatic(motion detection, alarm, schedule, cycle)	
Alarm data transmission	FTP, E-mail, Browser, CMS	
Protocol	TCP/IP、UDP、RTP、RTSP、RTCP、HTTP、DNS、DDNS、DHCP、FTP、NTP、PPPOE、SMTP、UPNP	
ONVIF	ONVIF 2.4	
Max. User Access	16 users, IE, Google, Firefox	
Smart Phone	Windows Mobile, iPhone, iPad, Android	
Auxiliary Interface		
Audio in	Support	
Audio out	Support	
BNC Video out	N/A	
RS485	Support	
USB	Support (32G USB flash)	
Alarm in	Support	
Alarm out	N/A	
IO Interface	Support	
General		
Power Supply	DC12V / PoE (802.3af)	
Power Consumption	<3W	
Working Environment	-20°C~+55°C , Less than 90% RH	
Dimensions	38 x 38 x 20mm	
Weight	0.15kg	

Connector



JP1 Power Supply Connector

1	DC12V
2	CMT_R
3	CMT_T
4	GND

JE1 Network Connector

1	RJ45_1
2	RJ45_2
3	RJ45_3
4	RJ45_6
5	Network Connected Light (Green light)
6	Network Status Light (Yellow light)

J1 IR-cut Connector

1	IR-CUT Control Signal 3.3V
2	IR-CUT Control Signal 3.3V

J2 Motorized Lens Connector(For AZ Series and lens YT2812FB.ICR-J-6)

1	Zoom A+
2	Zoom A-
3	Focus A+
4	Focus A-
5	Focus B+
6	Focus B-
7	Zoom B+
8	Zoom B-

J3 DC Auto-iris Connector

1	Drive -
2	Damp-
3	Damp+
4	Drive +

J4 P-Iris Connector

1	IRIS A-
2	IRIS B+
3	IRIS A+
4	IRIS B-

J5 IR Light Board Connector

1	IR Light Board Power Supply (12V)
2	GND
3	IR Feedback Signal Input (0.8V-12V)
4	IC PWM Control

J6 Functions Connector

1	Audio In (MIC/ Line)
2	GND (Audio)
3	Audio Out
4	GND
5	Reset
6	Alarm In
7	NULL
8	NULL
9	RS_485+
10	RS_485-

JU1

1	GND
2	USB_DP
3	USB_DM
4	5V Power Supply